

LIGHT COMMERCIAL

IES-BATT-61.44 (20.48~61.44kWh)



More Usable Energy

Deep cycle DOD control



Scalable Design

5.12kWh modular design
Min 4 modules per stack
Max 12 modules per stack
10 stacks per parallel



Easy Installation

Quick plug design, easy wiring



Safe & Reliable

Cobalt Free Lithium Iron Phosphate
(LFP) 6000 Cycles



Quick Commissioning

One button ON/OFF
Automatic ID assignment



Perfect Compatibility

Compatible with leading
PCS brands

INFINITE | ENERGY | STORAGE

www.ies.co.za | 021 773 0203 | support@ies.co.za | 066 225 4717

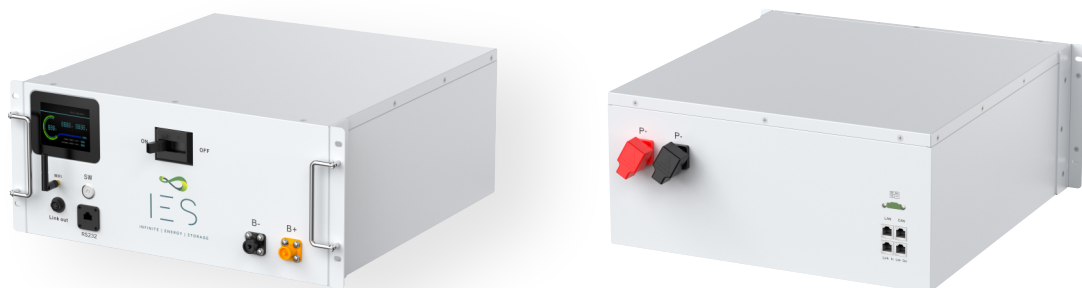
Model	IES-BATT 20.48	IES-BATT 25.60	IES-BATT 30.72	IES-BATT 35.84	IES-BATT 40.96	IES-BATT 46.08	IES-BATT 51.20	IES-BATT 56.32	IES-BATT 61.44
Cell Technology	LPF (LiFePO4)								
Number of Modules	4	5	6	7	8	9	10	11	12
Battery Usable Energy [1]	20.48 kWh	25.6 kWh	30.72 kWh	35.84 kWh	40.96 kWh	46.08 kWh	51.2 kWh	56.32 kWh	61.44 kWh
Nominal Voltage	204.8 V	256 V	307.2 V	358.4 V	409.6 V	460.8 V	512 V	563.2 V	614.4 V
Operating Voltage	179.2 – 224.64 V	224.0 – 280.80 V	268.8 – 336.96 V	313.6 – 393.12 V	358.4 – 449.28 V	403.2 – 505.44 V	448.0 – 561.60 V	492.8 – 617.76 V	537.6 – 673.92 V
Max. Charge and Discharge Current [2]	100A								
COMMUNICATION									
Display	3.5 inch Display								
Communication	CAN / RS485 / RS232								
WIFI Monitoring	Remote Monitoring / Settings / Firmware Updating								
GENERAL SPECIFICATION									
Dimension (W×D×H)	566 × 630 × 2220 mm 22.3 × 24.8× 87.4 inch								
Weight	327.5 kg (722.0 lbs)	370.5 kg (816.8 lbs)	413.5 kg (911.6 lbs)	456.5 kg (1006.4 lbs)	499.5 kg (1101.2 lbs)	542.5 kg (1196.0 lbs)	585.5 kg (1290.8 lbs)	628.5 kg (1385.6 lbs)	671.5 kg (1480.4 lbs)
Installation	Floor Stand								
Operating Temperature [3]	Charge: 0 to 50°C (32 to 122°F) Discharge: -15 to 50°C (5 to 122°F)								
Environmental Humidity	≤ 95%RH (No Condensation)								
Ingress Protection Rating	IP20								
Cycle life [4]	6 000 Cycles or Ten (10) years @ 80% DOD / 25°C/ 0.5C, 70% EOL								
Scalability	Min 4 Modules per Stack. Max 12 Modules per Stack. 10 Stacks in Parallel.								
Application	ON Grid / ON Grid + Backup / OFF Grid								
Compatible Inverters	Deye, Sunsynk, Solis, Ateess, Sofar, Sunways, Growatt, and Megarevo								
STANDARD COMPLIANCE									
Compliance	UN38.3/ IEC62619 / 1EC62040-1 / 1EC61000-6-2/ 1EC61000-6-4/ IEC62477-1 (More available upon request)								

[1] Test conditions: 100% depth of discharge (DOD), 0.2C rate charge & discharge at 25°C.

[2] 1C configuration as factory default.

[3] Charge/discharge derating occurs when the temperature is below 0°C or above 45°C.

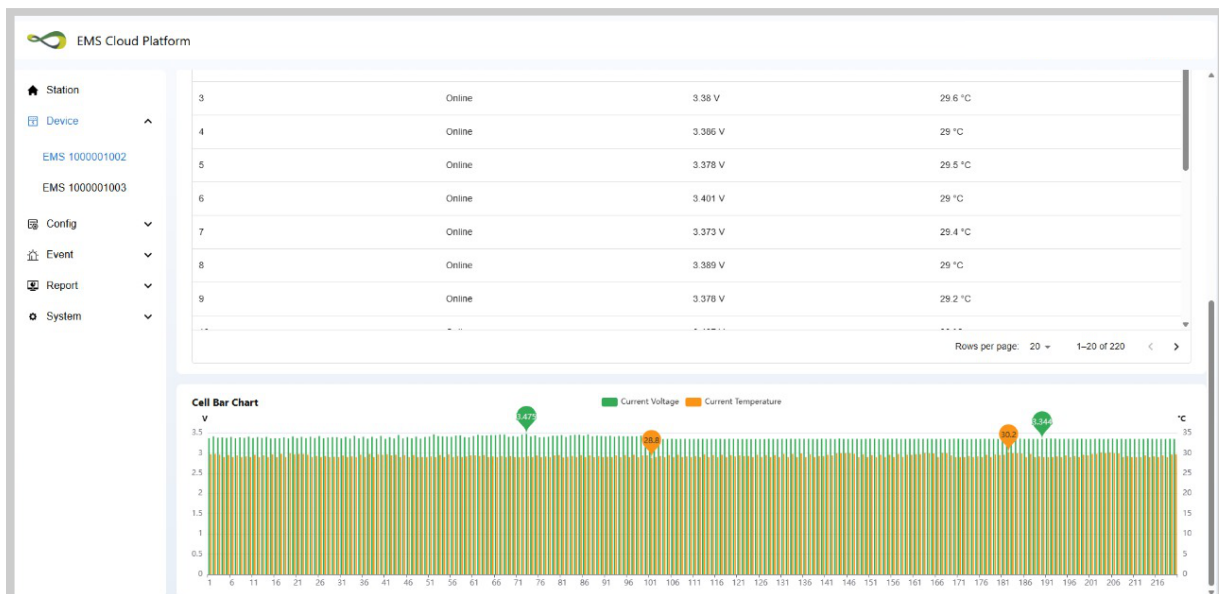
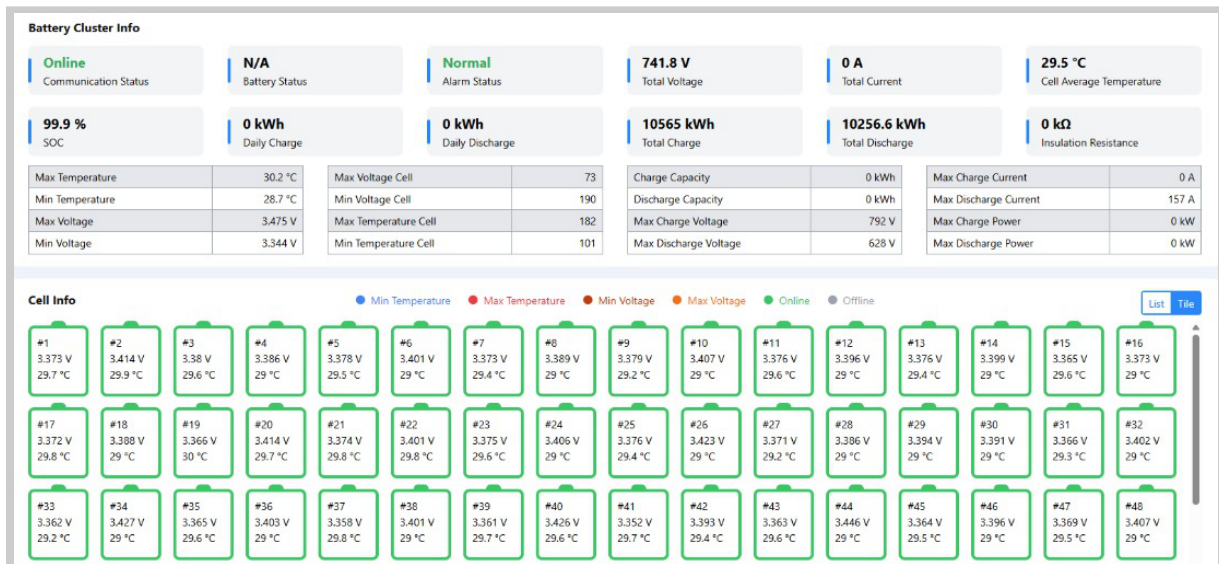
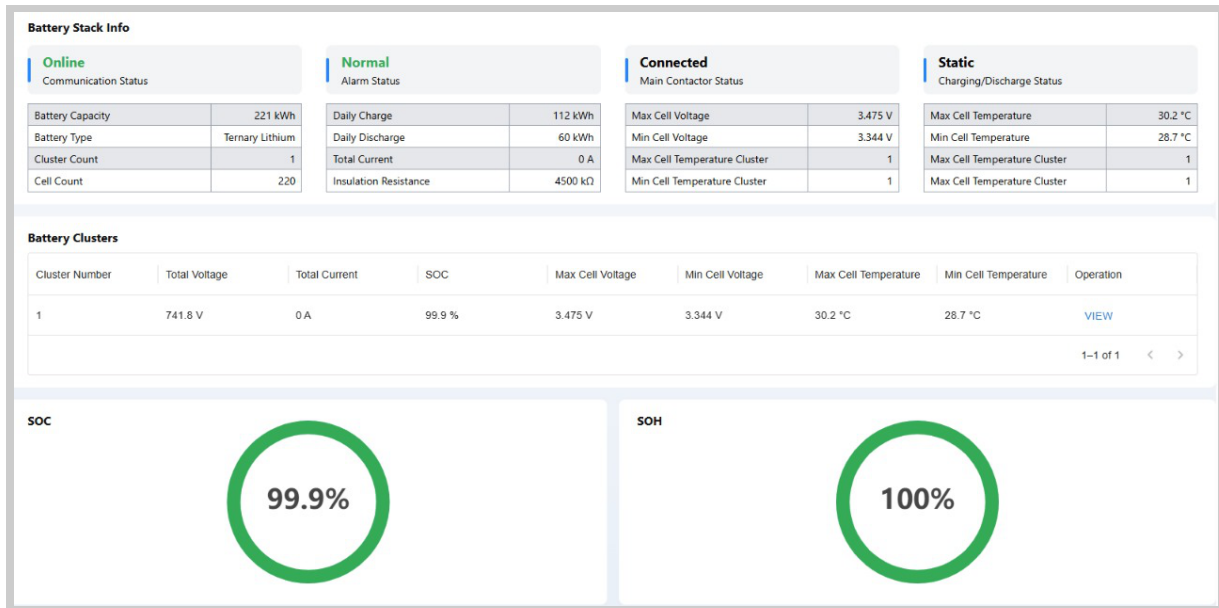
[4] Please refer to the Warranty Letter for applicable conditions, the warranty is due whichever comes first.



INFINITE | ENERGY | STORAGE

www.ies.co.za | 021 773 0203 | support@ies.co.za | 066 225 4717

Real Time Insights with the IES Remote Monitoring Platform



INFINITE | ENERGY | STORAGE

www.ies.co.za | 021 773 0203 | support@ies.co.za | 066 225 4717