

LIGHT COMMERCIAL

IES BATT-61.44 (20.48~61.44kWh)



More Usable Energy

Deep cycle DOD control



Scalable Design

5.12kWh modular design
Min 4 modules per stack
Max 12 modules per stack
10 stacks per parallel



Easy Installation

Quick plug design, easy wiring



Safe & Reliable

Cobalt Free Lithium Iron Phosphate
(LFP) 6000 Cycles



Quick Commissioning

One button ON/OFF
Automatic ID assignment



Perfect Compatibility

Compatible with leading
PCS brands

INFINITE | ENERGY | STORAGE

www.ies.co.za | 021 773 0203 | support@ies.co.za | 066 225 4717

| Model | IES-BATT 20.48 | IES-BATT 25.60 | IES-BATT 30.72 | IES-BATT 35.84 | IES-BATT 40.96 | IES-BATT 46.08 | IES-BATT 51.20 | IES-BATT 56.32 | IES-BATT 61.44 |
|---------------------------------------|--|-------------------------|-------------------------|--------------------------|--------------------------|--------------------------|--------------------------|--------------------------|--------------------------|
| Cell Technology | LPF (LiFePO4) | | | | | | | | |
| Number of Modules | 4 | 5 | 6 | 7 | 8 | 9 | 10 | 11 | 12 |
| Battery Usable Energy [1] | 20.48 kWh | 25.6 kWh | 30.72 kWh | 35.84 kWh | 40.96 kWh | 46.08 kWh | 51.2 kWh | 56.32 kWh | 61.44 kWh |
| Nominal Voltage | 204.8 V | 256 V | 307.2 V | 358.4 V | 409.6 V | 460.8 V | 512 V | 563.2 V | 614.4 V |
| Operating Voltage | 179.2 – 224.64 V | 224.0 – 280.80 V | 268.8 – 336.96 V | 313.6 – 393.12 V | 358.4 – 449.28 V | 403.2 – 505.44 V | 448.0 – 561.60 V | 492.8 – 617.76 V | 537.6 – 673.92 V |
| Max. Charge and Discharge Current [2] | 100A | | | | | | | | |
| COMMUNICATION | | | | | | | | | |
| Display | 3.5 inch Display | | | | | | | | |
| Communication | CAN / RS485 / RS232 | | | | | | | | |
| WIFI Monitoring | Remote Monitoring / Settings / Firmware Updating | | | | | | | | |
| GENERAL SPECIFICATION | | | | | | | | | |
| Dimension (W×D×H) | 566 × 630 × 2220 mm 22.3 × 24.8× 87.4 inch | | | | | | | | |
| Weight | 327.5 kg (722.0 lbs) | 370.5 kg (816.8 lbs) | 413.5 kg (911.6 lbs) | 456.5 kg (1006.4 lbs) | 499.5 kg (1101.2 lbs) | 542.5 kg (1196.0 lbs) | 585.5 kg (1290.8 lbs) | 628.5 kg (1385.6 lbs) | 671.5 kg (1480.4 lbs) |
| Installation | Floor Stand | | | | | | | | |
| Operating Temperature [3] | Charge: 0 to 50°C (32 to 122°F) Discharge: -15 to 50°C (5 to 122°F) | | | | | | | | |
| Environmental Humidity | ≤ 95%RH (No Condensation) | | | | | | | | |
| Ingress Protection Rating | IP20 | | | | | | | | |
| Cycle life [4] | 6 000 Cycles or Ten (10) years @ 80% DOD / 25°C/ 1C, 70% EOL | | | | | | | | |
| Scalability | Min 4 Modules per Stack. Max 12 Modules per Stack. 10 Stacks in Parallel. | | | | | | | | |
| Application | ON Grid / ON Grid + Backup / OFF Grid | | | | | | | | |
| Compatible Inverters | Deye, Sunsynk, Solis, Ateess, Sofar, Sunways, Growatt, and Megarevo | | | | | | | | |
| STANDARD COMPLIANCE | | | | | | | | | |
| Compliance | UN38.3/ IEC62619 / 1EC62040-1 / 1EC61000-6-2/ 1EC61000-6-4/ IEC62477-1 (More available upon request) | | | | | | | | |

[1] Test conditions: 100% depth of discharge (DOD), 0.2C rate charge & discharge at 25°C.

[2] 1C configuration as factory default.

[3] Charge/discharge derating occurs when the temperature is below 0°C or above 45°C.

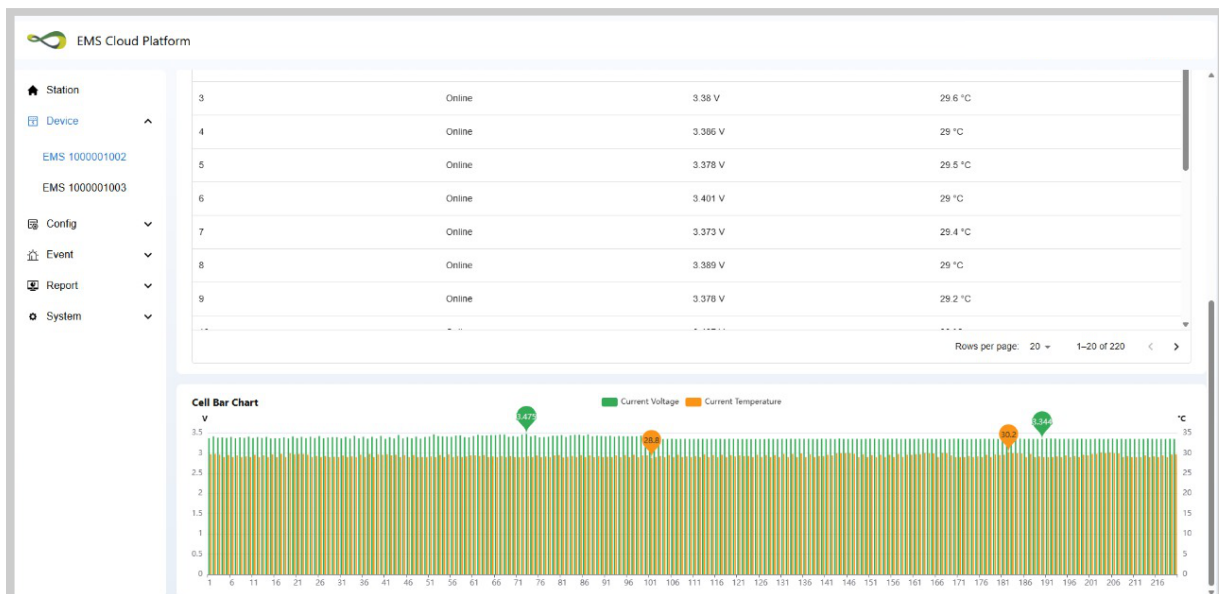
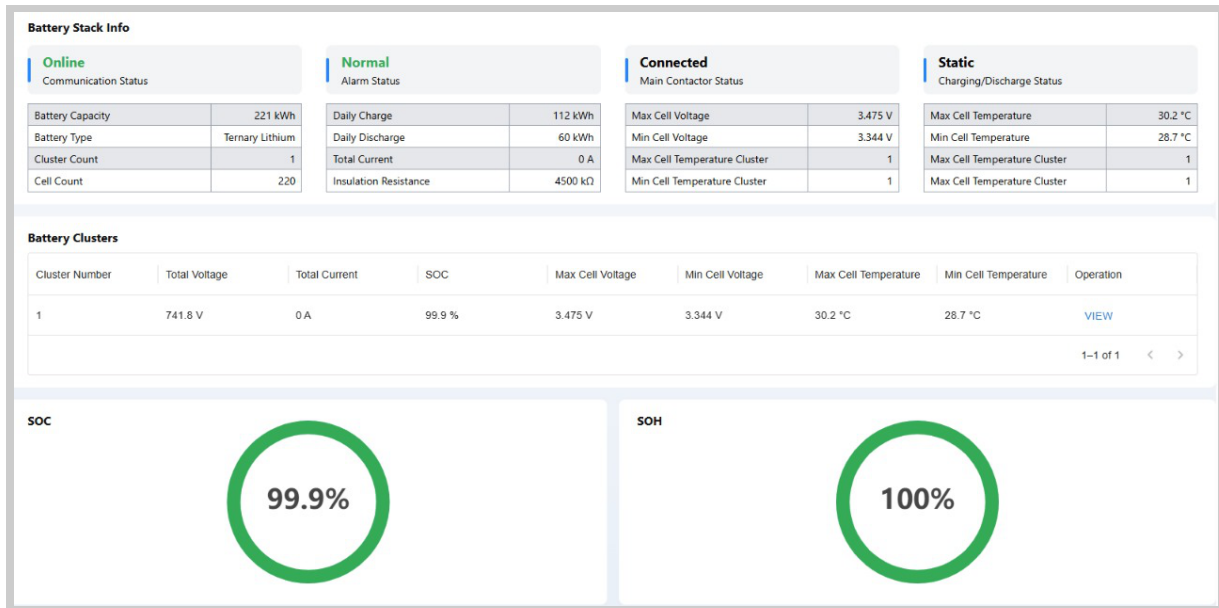
[4] Please refer to the Warranty Letter for applicable conditions, the warranty is due whichever comes first.



INFINITE | ENERGY | STORAGE

www.ies.co.za | 021 773 0203 | support@ies.co.za | 066 225 4717

Real Time Insights with the IES Remote Monitoring Platform



INFINITE | ENERGY | STORAGE

www.ies.co.za | 021 773 0203 | support@ies.co.za | 066 225 4717